



Australian Research Data Commons

# Interoperable #6

FAIR Data 101 virtual course  
Webinar 6

PRESENTED BY

Liz Stokes from your friendly ARDC skills team

<https://orcid.org/0000-0002-2973-5647>



This work is licensed under a [Creative Commons Attribution 4.0 International License](https://creativecommons.org/licenses/by/4.0/).

# Welcome to Interoperable webinar #6

Goto webinar chat window for questions or tech issues today

## Slack channels

**#introductions** find your equivalent at another institution; add some emoji reactions!

**#general** questions or comments for everyone

**Twitter:** #FAIR101 #ARDCtraining

[tiny.cc/code-conduct](https://tiny.cc/code-conduct)



# Interoperable #6 overview

- Interoperability - what does it even mean?
- Community agreed formats, language, vocabularies
- Controlled vocabularies
- Linked data
- Interoperable: Q+A
- Activities, quiz and community discussions

# Interoperability

11. (Meta)data use a formal, accessible, shared, and broadly applicable language for knowledge representation.
12. (Meta)data use vocabularies that follow FAIR principles
13. (Meta)data include qualified references to other (meta)data

# Interoperability

- Data that is interpretable by a computer
- Community agreed formats, languages and vocabularies

## Metadata

- Community agreed standards and FAIR vocabularies
- Links to related information using identifiers



Photo by [Ilnur Kalimullin](#) on [Unsplash](#)

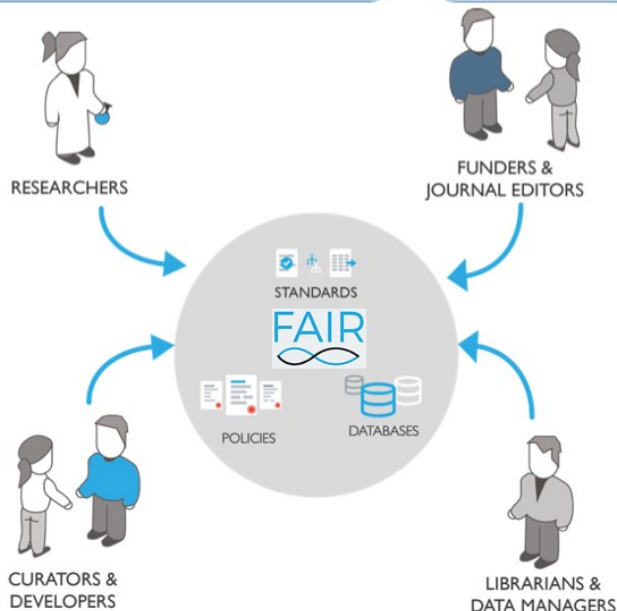


Australian Research Data Commons

# Community standards

My funder's data policy recommends the use of established standards, but which are widely endorsed and applicable to my **crop** data?

Which are the **mature standards** and **standards-compliant databases** that we should recommend to our authors?

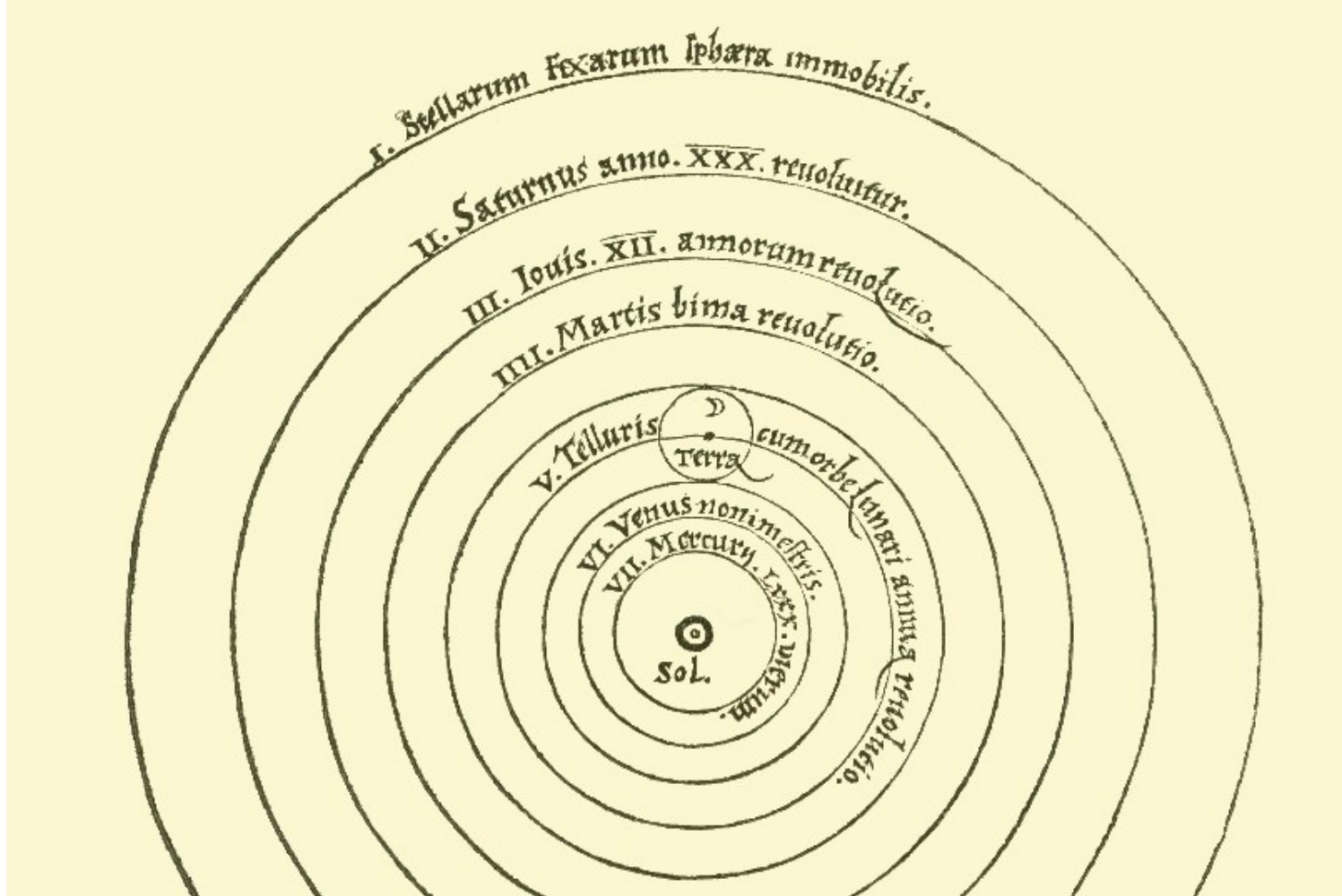


fairsharing.org

We need a standard for **sharing social science data**, what's out there and who should we talk to?

I have some old **rice genomic data** in format X, which is now **deprecated**; what format has replaced X?





# Vocabularies

# Vocabularies and metadata

- A vocabulary sets out the common language a discipline has agreed to use to refer to concepts of interest in that discipline.
- Researchers planning observation or surveys need to define their data items clearly.
- An agreed vocabulary (a standard) makes a good starting point for translating concepts into other vocabularies so that collaboration can occur.

# Find data for research

Find, access, and re-use data for research - from over one hundred Australian research organisations, government agencies, and cultural institutions

All Fields ▾ *Search for Data*

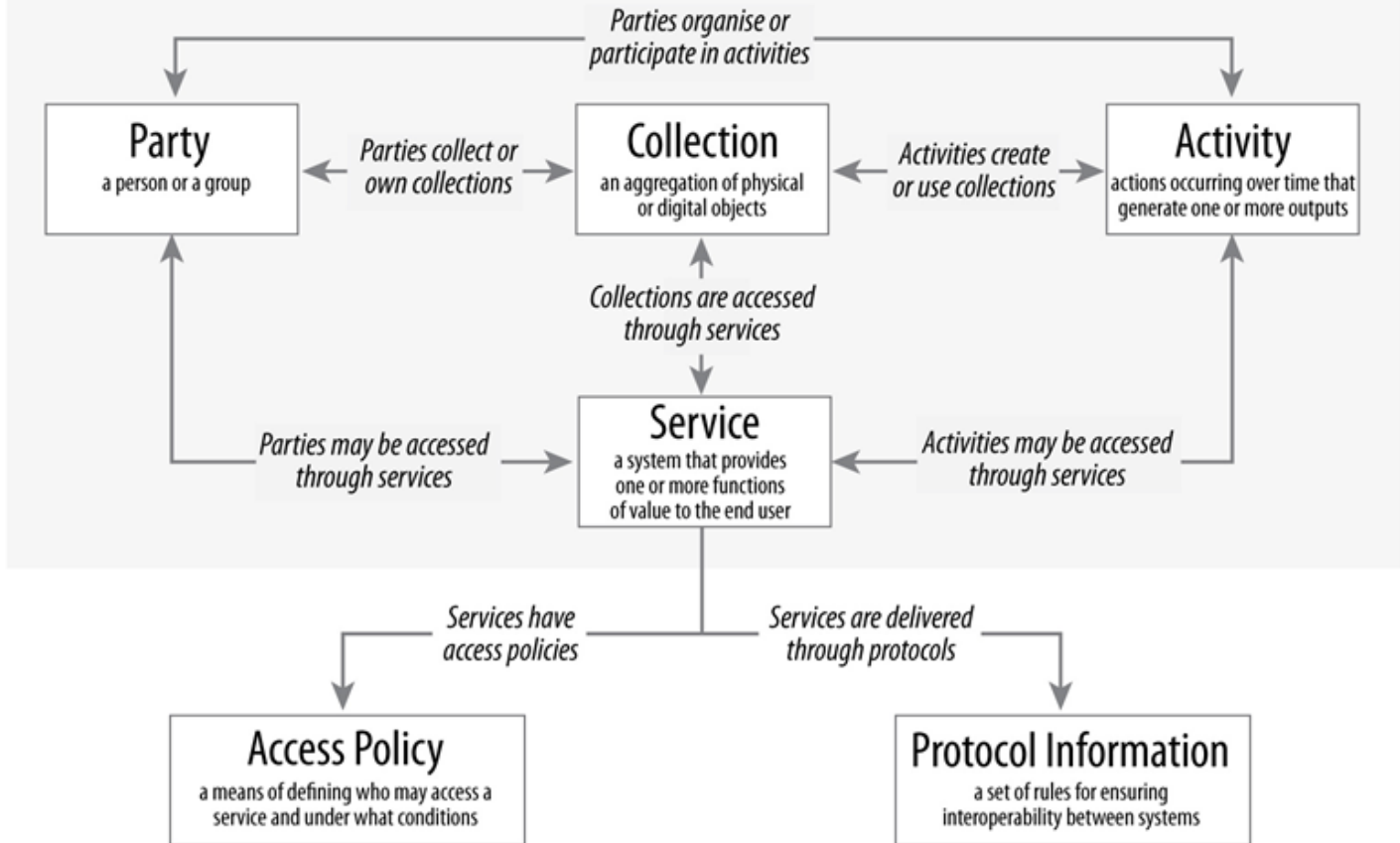
Publicly accessible online [Advanced Search](#) [Map Search](#)



# Registry Interchange Format - Collections and Services

- RIF-CS
- Based on [ISO 2146:2010 Information and documentation - Registry services for libraries and related organisations](#)
- Aggregating Aust research data
- Relationships between objects (qualified references)
- Controlled [vocabularies](#)

# Registry Object



# RIF-CS vocabularies

<https://services.ands.org.au/documentation/rifcs/vocabs/vocabularies.html>

**remember magpies**





<https://doi.org/10.1371/journal.pone.0029715>

# Linked open data



# Aust Govt - Digital Continuity 2020 Policy

“Agencies will have **interoperable information, systems and processes** that meet standards for short and long-term management, improve information quality and enable information to be **found, managed, shared and re-used** easily and efficiently.”

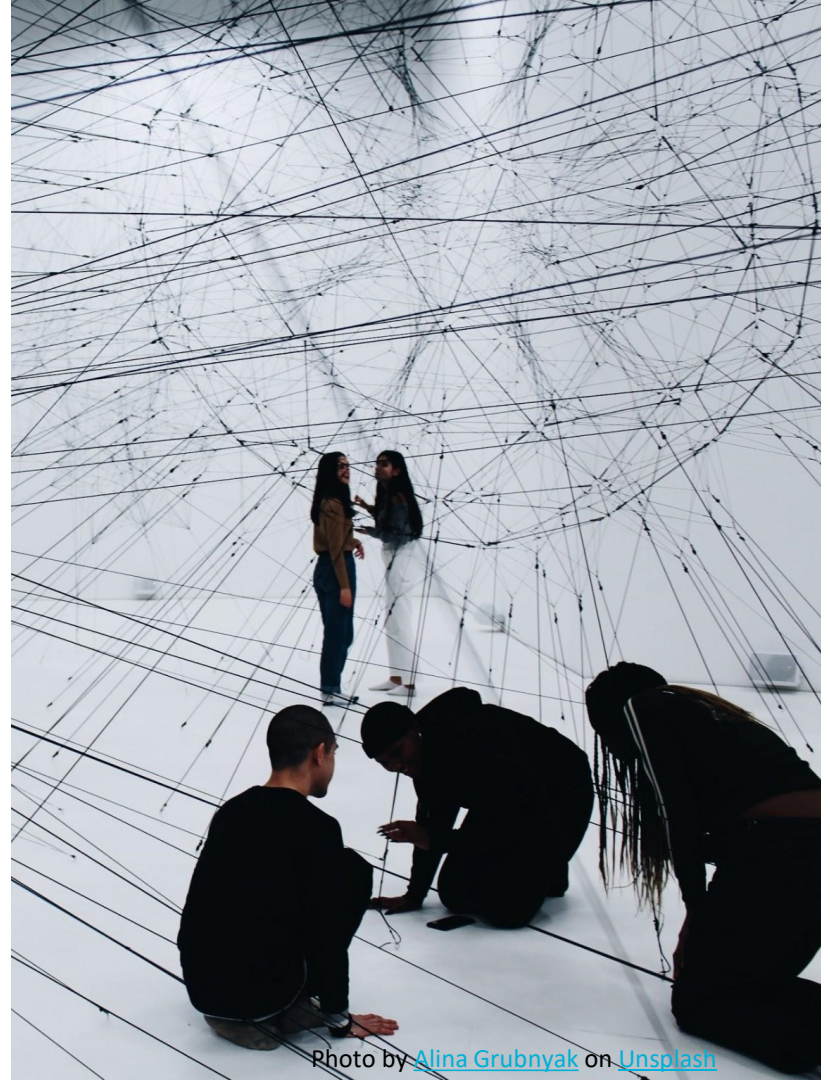
<https://www.naa.gov.au/information-management/information-management-policies/digital-continuity-2020-policy>



# Building interoperability

## Scenarios (NAA)

- Streamlining business processes
- Migrating legacy data
- Data exchange with stakeholders
- Standards for data publication



# Ontologies support page

- Online tutorials
  - <http://www.linkeddatatools.com/introducing-rdf>
  - <https://programminghistorian.org/en/lessons/intro-to-linked-data>
  - <http://euclid-project.eu/index.html>
- A [comics ontology](#) based on a comic of [Ada Lovelace and Charles Babbage](#)

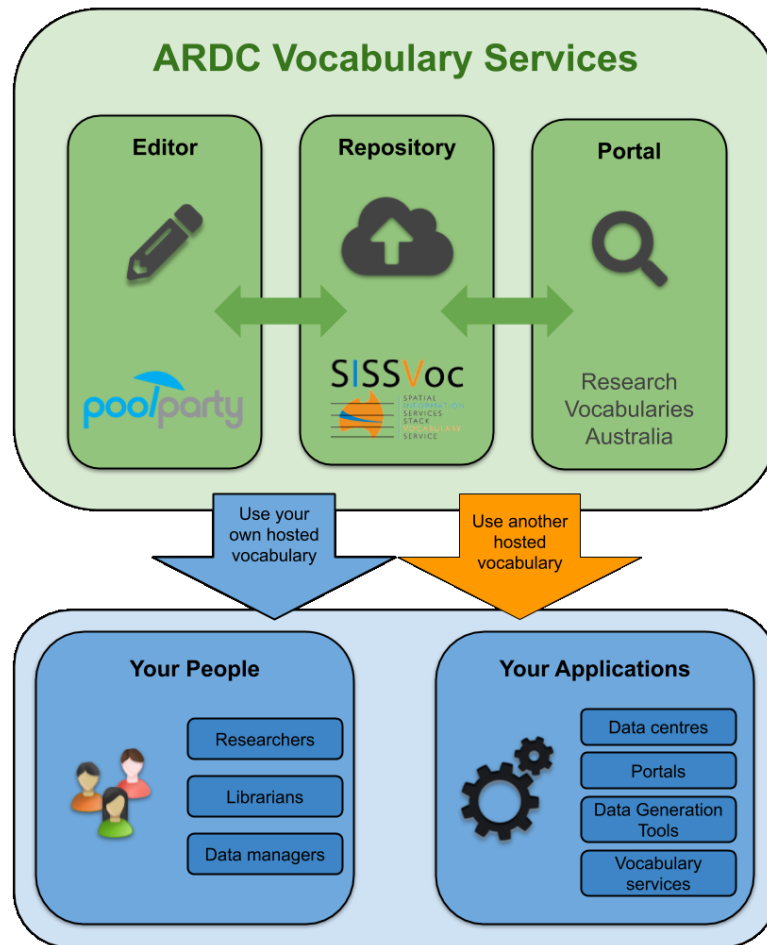
# Research Vocabularies Australia

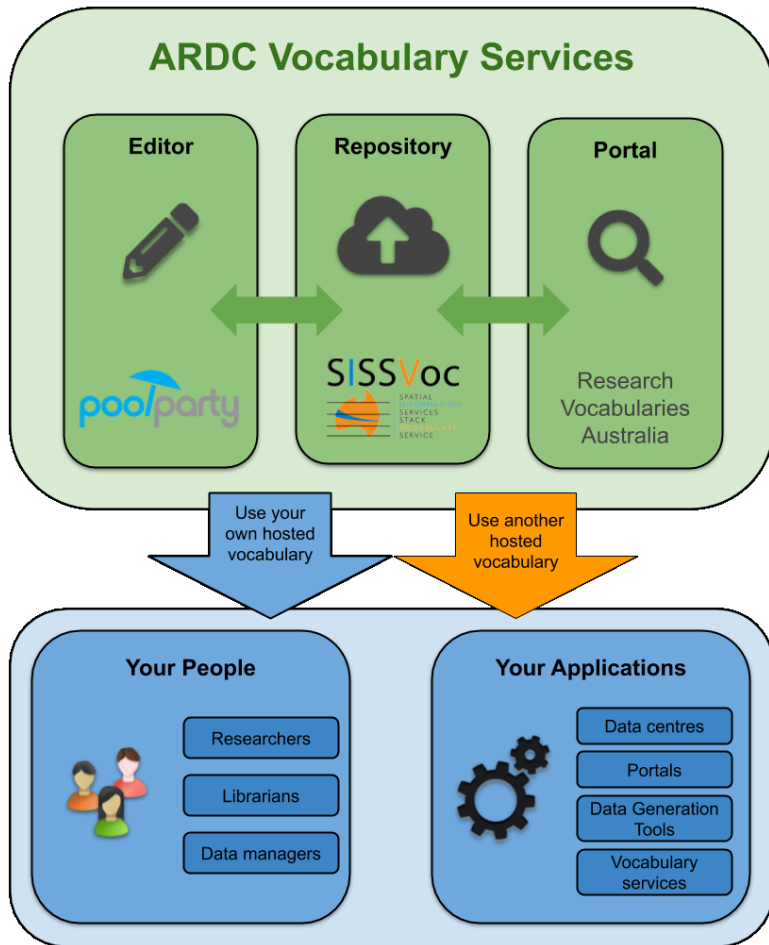
# Vocabulary services

- Indexing vocabularies are used to tag items in library catalogues and search portals and to provide keywords for academic journal articles.
- A vocabulary service is a machine-to-machine service that can support activities such as creating, managing and querying vocabularies.



- Create and manage vocabularies
- Collaborative platform
- Browse concepts using built-in visualisation tool
- Link concepts to other vocabularies
- Query your vocab via built-in SPARQL endpoint





- Upload vocabulary files in a variety of formats
- Describe versions of your vocabulary, their statuses, and changes made between versions
- Provide contact, access and licencing information about your vocabulary
- Describe your vocabulary by subject and language
- Describe individuals who have contributed to the vocabulary's creation or management
- Use the PoolParty Integration tool to quickly publish vocabularies managed in the RVA editor

# Summary - to make data interoperable

- Data model for metadata is well defined and well structured
- Use controlled vocabs which are documented and resolvable using PIDs
- Metadata include cross-references which provide contextual meaning to the data.

# Feedback



how is this going for you?

Photo by [Wynand van Poortvliet](#) on [Unsplash](#)



## CONTACT

Course content: @Liz @Matthias [liz.stokes@ardc.edu.au](mailto:liz.stokes@ardc.edu.au) [matthias.liffers@ardc.edu.au](mailto:matthias.liffers@ardc.edu.au)

Course administration, community groups: @Nichola [Nichola.Burton@ardc.edu.au](mailto:Nichola.Burton@ardc.edu.au)